

VULKANA



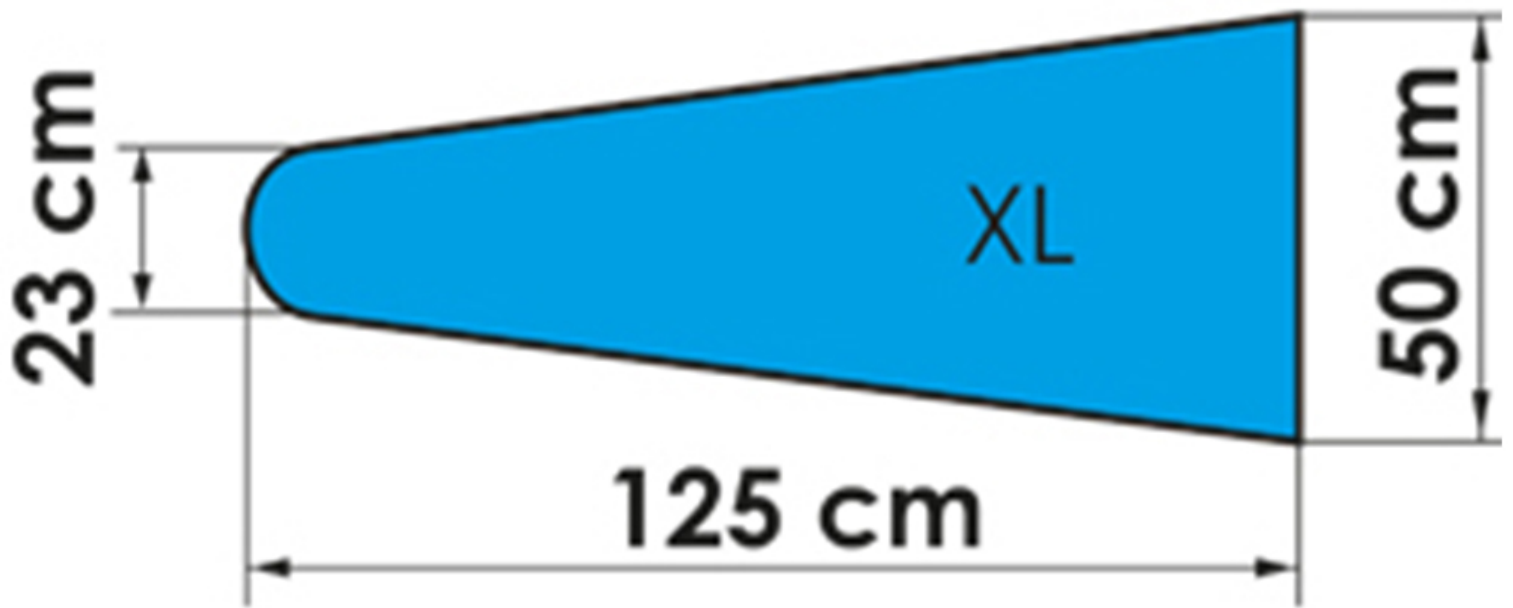
Range of utility suction, bowing, up-steam tables with height adjustment. Available with or without 6 - 7,5 kW boiler.

Product Codes: 3455, 3557, 3558

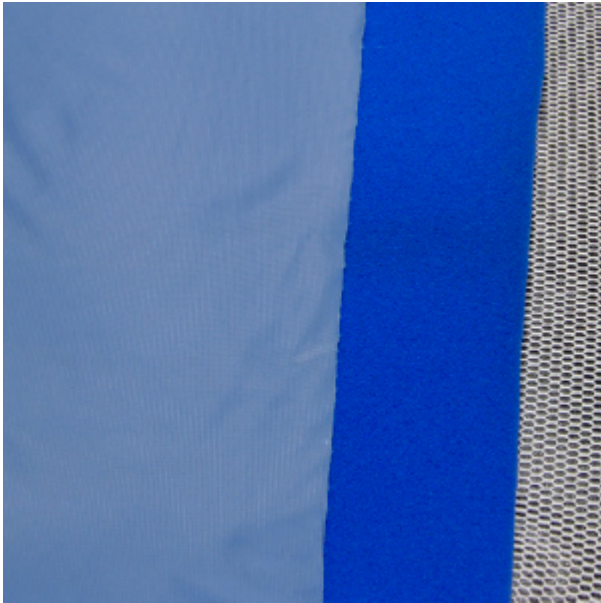
DESCRIZIONE:

Suction, blowing, up-steam tables with large ironing board and pressurized steam chamber under the surface which guarantees high steam volume and even distribution of steam on the surface. With height adjustment. Available for central steam connection or with 8 lt stainless steel boiler, 6 or 7,5 kW. Our premium steam electric iron is included in all models and the table is ready for a second iron connection. The tables can be set up for point to the left or point to the right use. It may also have double pedals for use on both sides.

MAIN FEATURES



XL surface size



Highly efficient foam padding

- Cover: HR3 cover.
- Padding: polyether foam.
- Open fibre mesh



Automatic boiler

8 litres, 6 or 7,5 kW with stainless steel vessel. With pump and electronic water level control.

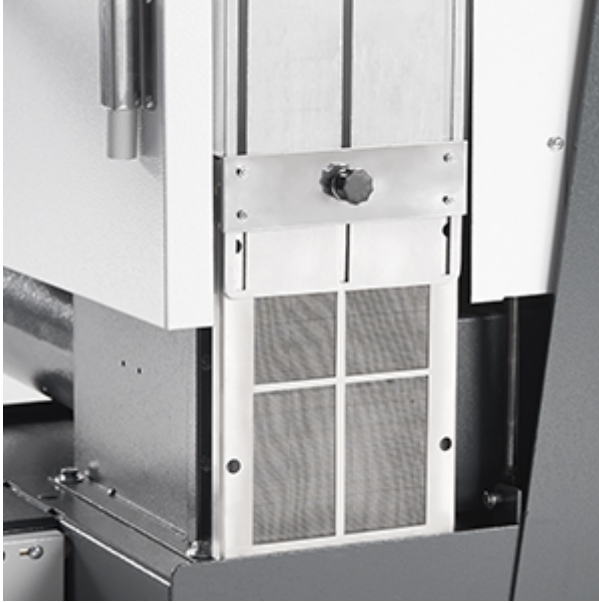


Padded hand plate included



F022 premium iron included

[FIND OUT MORE](#)



Adjustment of blowing strength



Overhead cable stand



Garment tray

OPTIONS



Balancer for iron, with or without lamp



Vacuum and blowing sleeve arm



Pivoting iron support for point-to-the-right operation



Stainless steel spotting arm and steam/air gun for hot spotting

[FIND OUT MORE](#)

TECHNICAL SPECIFICATIONS

	3455	3557	3558
Description	Universal up-steam table	Universal up-steam table with 6 kW boiler	Universal up-steam table with 7,5 kW boiler
Electrical requirements	230V 50Hz 220V 60Hz 110V 60Hz	400V 3N 50Hz 220V 3 60Hz	400V 3N 50Hz 220V 3 60Hz
Total power	1,16 kW	7,96 kW	9,46 kW
Suction power	0,36 kW 0,48 HP	0,36 kW 0,48 HP	0,36 kW 0,48 HP
Blowing power	0,36 kW 0,48 HP	0,36 kW 0,48 HP	0,36 kW 0,48 HP
Pump power	-	0,8 kW 1,7 HP	0,8 kW 1,7 HP
Iron	800 W	800 W	800 W

	3455	3557	3558
Steam pressure	–	5 bar 72 PSI	5 bar 72 PSI
Steam consumption	2,72 kg/h 6 lbs/h (iron)	–	–
Footprint	1375 x 495 mm 54" x 19,5"	1375 x 495 mm 54" x 19,5"	1375 x 495 mm 54" x 19,5"
Dimensions	1780 x 600 x 1840 – 2020 mm 70" x 24" x 73" – 80"	1780 x 600 x 1840 – 2020 mm 70" x 24" x 73" – 80"	1780 x 600 x 1840 – 2020 mm 70" x 24" x 73" – 80"
Net weight	99 kg 218 lbs	143 kg 315 lbs	143 kg 315 lbs